

LOWER TEMPERATURES, HIGHER TURNOUT:

Celebrating Our Members

Thank you to everyone who joined us for our annual Member Appreciation Days. This three-day celebration is all about YOU, our valued members, and we were thrilled to welcome more of you at each location than we have in recent years!

Despite the cooler-than-usual June temperatures, the appreciation expressed by many of those in attendance

truly warmed our hearts. It was wonderful to see so many members reconnecting with friends and neighbors, playing games, winning door prizes, and enjoying the picnic-style lunch, complete with everyone's favorite soft serve ice cream for dessert.

Your participation made this event a success. Here are a few highlights for those who couldn't attend.



Family fun was had at each location with bean bag and ring toss games being played by members of all ages.



Many in attendance enjoyed the meal, ice cream, and fellowship with others.



Door prizes were given out to members who played our Plinko game and then stopped at the information booth and learned how to sign up for SmartHub and outage alerts.



We captured a few of those who stopped to get a picture of themselves as a future lineman. In fact, our own lineman Rowdy Kochevar stopped for a photo with his boys, and who knows, they too could be linemen someday.

An air fryer was given away at each location. The lucky winners are Larry Monroe, Sheldon; Mary Proden, Ladysmith; and Ken Brandt, Hayward (not pictured).



DAIRYLAND POWER AND JREC JOIN FORCES TO SUPPORT COMMUNITY SAFETY



Connie Lepley of the Sawyer County Fire and Emergency Service Association (center) accepted this donation from Dairyland Key Accounts Manager Jenny Kuderer-Radcliffe and JREC's General Manager/CEO Kurt Harris.

A collaborative effort between Dairyland Power Cooperative and Jump River Electric Cooperative (JREC) was recently made to enhance community safety in Sawyer County. Together, we have donated \$2,000 to the Sawyer County Fire and Emergency Service Association.

This donation, facilitated through Dairyland's Cooperative Contributions Program, will aid the Association in fulfilling its mission to protect and serve our community. This money will be used to help meet general needs and provide essential safety equipment, benefiting the 13 fire departments within the Sawyer County Fire & Emergency Service Association.

JREC is committed to enhancing community safety and preparedness, and this donation will contribute to those efforts. The money for our portion of the \$2,000 donation came from the Federated Youth Foundation, which is funded by unclaimed capital credits.

Dairyland and its member cooperatives, including JREC, are dedicated to making a positive impact in various sectors, including healthcare, education, and community development. This donation is a testament to our continuous efforts to support local initiatives.



DID YOU SEE?

We're holding another photo contest

It's not too late to enter your best three photos taken within the JREC service area into the contest for a chance to win \$50. The contest ends August 20. Keep your camera ready so you can capture the moment. Find contest guidelines, consent form, and prize information at jrec.com/photo-contest.

KNOWING WHAT'S BELOW CAN SAVE YOUR LIFE

National Safe Digging Day—August 11

It's that time of year when many homeowners have a long To Do list of outdoor projects to be tackled. Before digging (literally) into any DIY outdoor project, be sure you CALL 811 for Digger's Hotline. It's easy, it's free, and it's the law.

In Wisconsin, whether you're planting a tree or building a house, there is a high likelihood that underground utilities exist within the dig site area. Hitting an underground utility line does more than disrupt service; it risks the safety of the person digging and the public. Homeowners should ALWAYS request a utility locate for any project involving digging.

Digger's Hotline will forward your underground locating request to all relevant utility operators, including JREC. Make sure to call 811 at least three business days before starting your project—four is even better. You can also submit your request online at diggershotline.com.

You should know the color. That's right, each utility type is marked with a specific color:

- **Red—Electric**
- **Orange—Communications, Telephone/CATV**
- **Blue—Potable Water**
- **Green—Sewer/Drainage**
- **Yellow—Gas/Petroleum Pipe Line**

Your responsibility does not end after you submit your request. Confirm that all affected utility operators have responded by comparing the marks and flags to the list of utilities notified on your Digger's Hotline ticket. You are NOT clear to dig until all utilities have marked their lines. If you cannot maintain the marks during your project, please contact 811 to request a relocate.

Failing to call, even if you don't hit a line, can lead to mandated education, legal action, or fines. Digger's Hotline is available 24 hours a day, 7 days a week.

JOIN US AT NATIONAL NIGHT OUT

This event will be held on Tuesday, August 5, from 5 to 7 p.m. at the Ladysmith Memorial Park.

National Night Out is a free, family-friendly event focused on promoting community partnerships and public safety.

There will be a free meal, drawings, activities, demonstrations, prizes, and more. Be sure to stop by JREC's station and meet our linemen and learn more about electrical safety. Kids can pick up a toy hard hat, while the supplies last.



POLICE • COMMUNITY PARTNERSHIPS

BRIGHT FUTURES

Jump River Electric proudly supports the future of its members and their dependents by investing in their education through its annual scholarship program. Each year, the Cooperative offers a variety of scholarship opportunities. Each student pictured received a \$1,000 scholarship through the Federated Youth Foundation, which is funded by unclaimed capital credits.



Spencer Hautamaki
Bruce High School



Sydney Bratanich
Flambeau High School



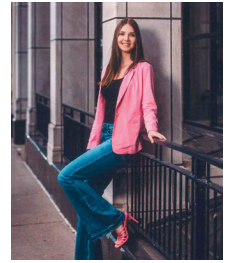
Isabelle van Doorn
Flambeau High School



Eva Kopacz
Gilman High School



Alison Krizan
Gilman High School



Jaylyn Orth
Gilman High School



Sierra Stojek
Hayward High School



Brianna Hexum
Hayward High School



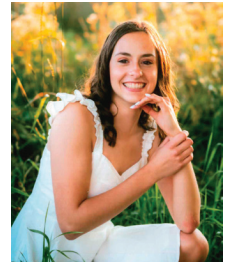
Gretchen Woelber
Hayward High School



Emily Kirkman
Holcombe High School



Timmy Meltz
Ladysmith High School



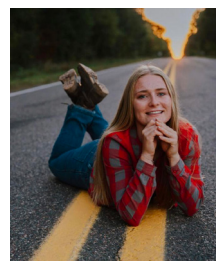
Heather Nelson
Ladysmith High School



Louis Zimmer
Ladysmith High School

No Photo
Available

Aniyah Cross
LCO High School



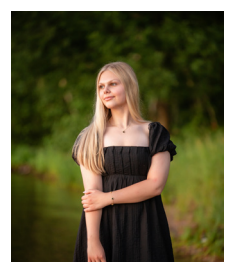
Addison Gumz
Rib Lake High School



Sydney Gundlach
Stanley-Boyd High School



Addison Mahr
Stanley-Boyd High School



Allison Roberts
Winter High School

Non-traditional Scholarship Recipients



Grant Halmstad



Emma Grunseth



Justine Kane



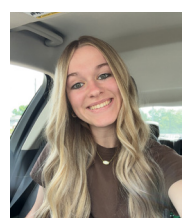
Zoe LaDuke



Johanna Lazar



Kaden MacPherson



Kendall Webster

SENDING SOMEONE OFF TO COLLEGE?

Teach students about electrical safety first

Today's college student uses many electronics for school, work, and play. When used improperly, these helpful gadgets can become electric hazards. If you or a loved one is heading off to college, Safe Electricity has the following tips to prevent electrical accidents and fires.



- **Extension cords are only for temporary use.** Dorm rooms may not have enough outlets to plug in all your gadgets at once. If you must use extension cords, use them temporarily and unplug them when not in use.
- **Consider purchasing power strips with an over-current protector,** which will shut off power automatically if there is too much current being drawn.
- **Use light bulbs with the correct wattage for lamps;** if no indication is on the fixture, do not use a bulb with more than 60 watts.
- **Never tack or nail an electrical cord** to any surface or run cords across traffic paths, under rugs or furniture.
- **Keep all electrical appliances and cords safely away** from bedding, curtains, and other flammable material.
- **Discard or repair damaged electronics.** It may be tempting to use an electronic with a frayed cord or damaged plug-in to save money. However, damaged electronics should not be used, since they can shock or electrocute students.
- **If your lights flicker, electronics shut off, or circuits trip**—notify campus staff.
- **Use only laboratory certified** appliances and electronics.
- **Watch out for overheated outlets.** If an electrical outlet becomes so hot you cannot leave your hand on it, there is potential for a fire. Unplug everything from the outlet and notify landlord or dorm officials immediately.

College students should also know what to do if there is a fire, including escape and meeting plans. There are more than 3,500 fires on college campuses every year. Help prevent fires by understanding electrical safety and sharing what you know with loved ones.

SHIFT for Savings

Reduce your energy use between 2 and 8 PM.

With your help, we can lower demand, keep rates stable, and decrease stress on the electric grid.



BLEND UP Summer REFRESHMENT

Nothing beats a refreshing smoothie on a hot summer day! Before you blend, keep electrical safety in mind:

- Dry your hands completely before plugging in or operating your blender.
- Plug your blender (and other high-wattage appliances) directly into an outlet instead of power strips to prevent overheating.
- Make sure kitchen outlets, and any outlets near a water source, have Ground Fault Circuit Interrupter (GFCI) protection to help prevent shock.
- Replace appliances with broken plugs or cords that look frayed, worn or cracked.
- Unplug your blender before removing stuck ingredients or cleaning it.
- Never submerge the blender base in water.

TROPICAL SUMMER SMOOTHIE

INGREDIENTS:

- 1 cup frozen mango
- 1 banana
- ½ cup coconut water
- ½ cup Greek yogurt
- ½ cup pineapple chunks
- Ice as needed for desired consistency

DIRECTIONS:

1. Add the mango, banana, coconut water, yogurt and pineapple to blender.
2. Blend until smooth.
3. Add ice and blend until smooth.
4. Pour into glasses, enjoy!

(makes 2 servings)



1102 West 9th Street North • P.O. Box 99, Ladysmith, WI 54848
715-532-5524 (Ladysmith); 715-634-4575 (Hayward) • www.jrec.com

After-hour emergency service, call 866-273-5111
Pay by Phone: 844-967-2320

Find us on Facebook, X, and Instagram



Denise Zimmer, Editor



Scan the QR code to find us on Facebook (left) and Instagram (right).



Jump River Electric Cooperative, Inc.

Since 1938

Your Touchstone Energy® Cooperative



JREC is an equal opportunity provider and employer.